



CAPABILITY STATEMENT – ROADWAY

KEY STAFF

Vice President – Civil Engineering Services
Matthew Walerysiak, PE, CBSI
mwalerysiak@markosky.com

Civil Engineering Division Manager
Brian Watkins, PE
bwatkins@markosky.com

Traffic Department Manager
Jonathon Balko, PE
jbalko@markosky.com

Roadway Department Manager
Shane Ritenour, PMP
sritenour@markosky.com

CORE COMPETENCIES & SERVICES

THE MARKOSKY ENGINEERING GROUP, INC. consistently meets design challenges on roadway projects by taking a collaborative approach to finding design solutions. Our engineering professionals incorporate the expertise of our environmental, structures, and construction departments to deliver comprehensive solutions to roadway designs.

Markosky provides design expertise for roadway reconstruction and realignments, traffic signal and intersection improvements, toll facilities, limited access highways, and major interstate highways. Our team approach allows us to place importance on public safety, functionality of design, scheduling constraints, and service our clients' needs.

Our core Roadway services include the following:

- ❖ Roadway Design
- ❖ Pavement Design & Restoration
- ❖ Traffic Control Development Including Signal Design
- ❖ Hydrologic & Hydraulic Studies
- ❖ Erosion & Sedimentation Control/Permitting
- ❖ Highway Lighting Design
- ❖ Utility Coordination
- ❖ Public Involvement
- ❖ Drainage Design
- ❖ Stormwater Management
- ❖ Right of Way Development
- ❖ Design Management
- ❖ Highway Occupancy Permits
- ❖ Signing, Pavement Marking & Delineation

Markosky has a diverse team of engineers, designers and technicians committed to designing roadways with improved functionality and safety for the traveling public.



OHUCP DBE

NAICS Codes:
541330, 541620, 541720, 541990, 237110

UEI:
EEMAGUCMLYG1

CAGE:
50GY5

WWW.MARKOSKY.COM

740.619.1242



PAST PERFORMANCE

PA Route 980 Realignment & Pedestrian Bridge

Client: PennDOT District 12-0

Services

- ❖ Roadway & Structure Design
- ❖ Traffic Analysis
- ❖ Utility Coordination, H&H, E&S, Permitting
- ❖ Final Contract Documents
- ❖ Construction Consultation & Public Involvement

PA 453 I-99 to Beastons Road

Client: PennDOT District 9-0

4.4 miles of Pavement Preservation, Widening and Slope Stabilization

Services

- ❖ Retaining Wall Design
- ❖ Contour Grading and Drainage
- ❖ Signing and Pavement Marking
- ❖ Maintenance and Protection of Traffic

Donohoe Road / Georges Station Intersection

Client: PennDOT District 12-0

Services

- ❖ Intersection Design
- ❖ Alternative Analysis (Roundabout vs Signalized)
- ❖ Roundabout Design
- ❖ Maintenance and Protection of Traffic
- ❖ Signing and Pavement Markings
- ❖ Stormwater Management / Drainage Design
- ❖ Highway Lighting Design



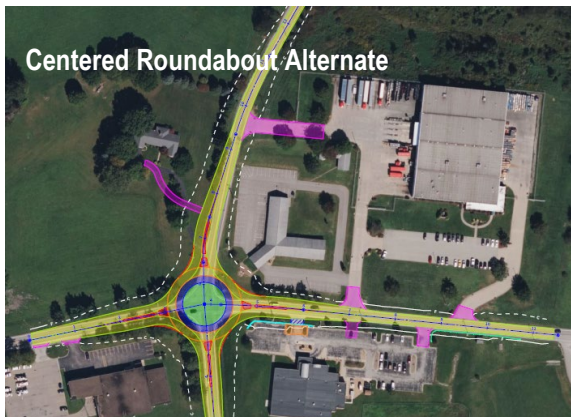
PA 980 Realignment & Pedestrian Bridge

Washington County, PA



PA 453 I-99 to Beastons Road

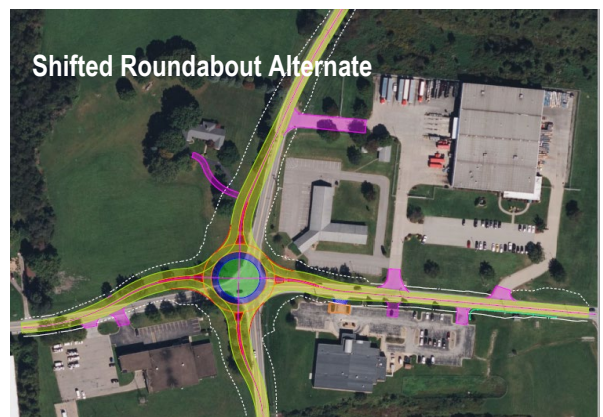
Blair County, PA



Centered Roundabout Alternate

Donohoe Road / Georges Station

Westmoreland County, PA



Shifted Roundabout Alternate

Donohoe Road / Georges Station

Westmoreland County, PA