

CAPABILITY STATEMENT – MUNICIPAL

KEY STAFF

Environmental Engineering Department Manager

Bryan Vogelsang, PE

bvogelsang@markosky.com

Senior Project Manager Traffic Department

Dorothy Boring, PE, PTOE

dboring@markosky.com

Senior Project Manager Roadway Department

Douglas Coffman, PE, CBSI

dcoffman@markosky.com

CORE COMPETENCIES & SERVICES

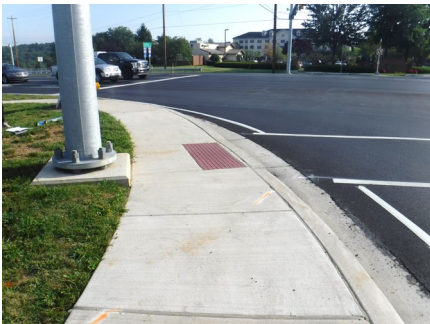
THE MARKOSKY ENGINEERING GROUP, INC. provides MS4 (Municipal Separate Storm Sewer Systems) permitting assistance for state, city, and local governments. Our professional engineers specialize in development and implementation of a Stormwater Management Program of Best Management Practices by assisting MS4 approved public entities in meeting the six minimum control measures required for permitting as designated by the EPA or DEP.

Markosky ensures quality designs and consistent agency reviews resulting in cost effective permitting efforts on behalf of our clients.

Our core Municipal services include the following:

- ❖ Subdivision / Site Plan Reviews
- ❖ Paving & Street Maintenance Programs
- ❖ Preparation of Construction Drawings & Specifications
- ❖ Construction Inspection / Management
- ❖ Street Inspections
- ❖ CDBG & WCD Program Projects
- ❖ NBIS Bridge Inspection
- ❖ MS4 Program Compliance
- ❖ Budget Preparation
- ❖ Coordination with PennDOT & DEP
- ❖ Traffic Plan Review, Analysis & Design
- ❖ Waterline & Sanitary Sewer Design

Markosky provides municipal engineering services to public works professionals, public agencies, institutions and businesses to foster continued improvement in the quality of public works, municipal infrastructure.



ECMS: PAUCP DBE (WBE)
000243 2182

NAICS Codes:
541620, 541330, 541990, 237110, 541720

UEI: EEMAGUCMLYG1
CAGE: 50GY5

WWW.MARKOSKY.COM

724.238.4138



PAST PERFORMANCE

Waddle Road Bridge Interchange

Client: Patton Township

Services

- ❖ Design Management
- ❖ Final Plan Reviews
- ❖ Utility Relocation
- ❖ Reimbursement Reviews

Jacobs Creek Watershed Association DEP 319 Nonprofit Sources Pollution Grant Program

Client: Jacobs Creek Watershed

Services

- ❖ Innovative Stormwater Retrofit
- ❖ Construction Drawings & Documents
- ❖ Municipal Coordination
- ❖ Construction Inspection

Lincoln Avenue Sidewalk Improvements

Client: Waynesburg Borough

Services

- ❖ Municipal Design Services
- ❖ Prepared Construction Drawings and Contract Documents
- ❖ Sidewalk and ADA Improvements



Waddle Road Bridge Interchange

Centre County, PA



Jacobs Creek Watershed

Westmoreland County, PA



Jacobs Creek - Scottdale Firemen Parking

Westmoreland County, PA



Lincoln Avenue Sidewalk

Greene County, PA

LIGONIER, PA

YORK, PA

STEUBENVILLE, OH

CHARLESTON, WV

