

CAPABILITY STATEMENT – ARCHAEOLOGY

KEY STAFF

**Cultural Resources
Department Manager**
Ryan Rowles, MA, RPA
rrowles@markosky.com

**Senior Archaeologist /
Group Leader**
Jessica Schumer-Rowles, MA,
RPA
jschumerrowles@markosky.com

Principal Investigator
Douglas Riethmuller, MA, RPA
driethmuller@markosky.com

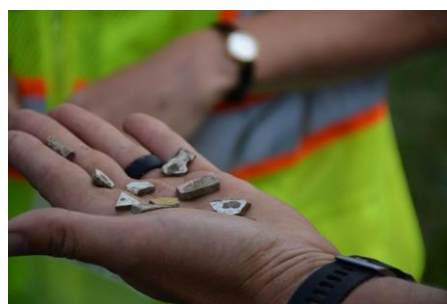
CORE COMPETENCIES & SERVICES

THE MARKOSKY ENGINEERING GROUP, INC. archaeologists meet and exceed the Secretary of the Interior (SOI) Standards (36CFR§61) for their positions. We are skilled at multidisciplinary research, sound and reflexive fieldwork methodologies, and quality data analysis. Our clients can rely on our communicative management, as well as our clear and thorough reports, to streamline the Section 106 Concurrence process and accomplish any project specific goals.

Our core Archaeology services include the following:

- ❖ Phase I, II, and III Archaeological Investigations
- ❖ Resource Identification and Planning
- ❖ Determinations of Eligibility and Effect
- ❖ Archaeological Monitoring
- ❖ Geomorphological Investigations
- ❖ Geophysical Investigations (GPR, Resistivity, Magnetometer)
- ❖ Historic Grave Identification
- ❖ Curation Standards and Methods
- ❖ Consulting Party Coordination
- ❖ Avoidance Alternatives
- ❖ Agreement Documents
- ❖ Alternative Mitigation
- ❖ Historic Research
- ❖ Section 106 Training/ Seminars

Markosky’s Archaeology Group is a reliable and hardworking team of professionals dedicated to streamlining our clients’ Section 106 or other compliance needs, no matter the size or complexity of your project.



ECMS: PAUCP DBE (WBE)
000243 2182

NAICS Codes:
541620, 541330, 541990, 237110, 541720

DUNS:
841651081

CAGE:
50GY5

WWW.MARKOSKY.COM

724.238.4138



PAST PERFORMANCE

Home Bridge #3 Bridge Replacement

Client: PennDOT District 10-0

Services

- ❖ Phase I Survey
- ❖ Phase II Testing of McQuilken Blacksmith Shop Site
- ❖ Phase III Data Recovery of former blacksmith shop
- ❖ Producing a Byways to the Past Publication

Compass Inn Museum Long-Term Planning

Client: Ligonier Valley Historical Society

Services

- ❖ Historic Archives and Public Records Research
- ❖ Geophysical Survey (GPR, Resistivity, Conductivity)
- ❖ Archaeological Ground-Truthing of Geophysical Anomalies and Previously Recorded Features
- ❖ Media Interviews / Assisted with Tours
- ❖ Assisted with Grant Writing

Tuscarora Bridge Replacement

Client: PennDOT District 9-0

Services

- ❖ Geomorphological Investigations
 - Identified Historic Landscape Alterations
- ❖ Phase I Archaeological Investigations
 - Recorded ca. 1863 Cisney Sawmill site
 - Cleared the project for Section 106



Home Bridge #3

Indiana County, PA



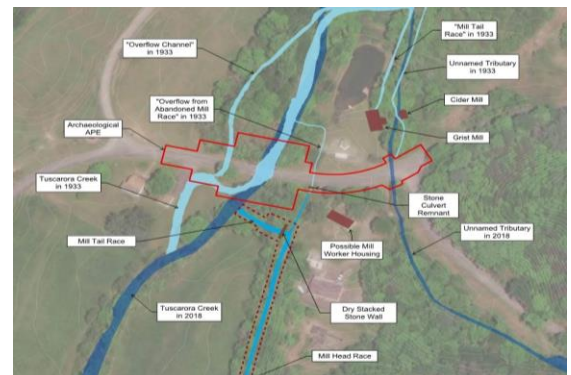
Compass Inn Museum

Westmoreland County, PA



Tuscarora Bridge

Juniata County, PA



Tuscarora Bridge

Juniata County, PA